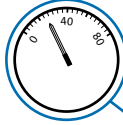


# EngiBOX

The Engine Monitoring System for ROTAX engines



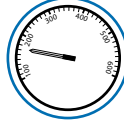
Oil Pressure



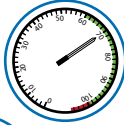
Oil Temperature / Air Temperature



Cylinder Head Temperature (CHT) / Coolant Temperature (CT)



Revolutions per Minute (RPM)



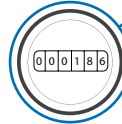
Exhaust Gas Temperature (EGT)



Manifold Pressure (MAP)



Hobbs meter



## The EngiBOX System: engine management & control

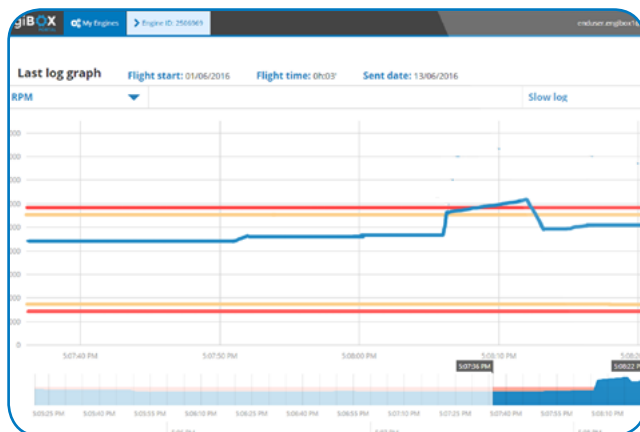


**1.** Monitor your engine real-time during the flight and store engine data with **EngiBOX**.

**2.** Get Instant Support Service from your Rotax Service Center, through the free **EngiBOX App**.

**3.** Thanks to the **EngiBOX Portal**, you can manage your engine at home, view your flights and the recorded engine performance.

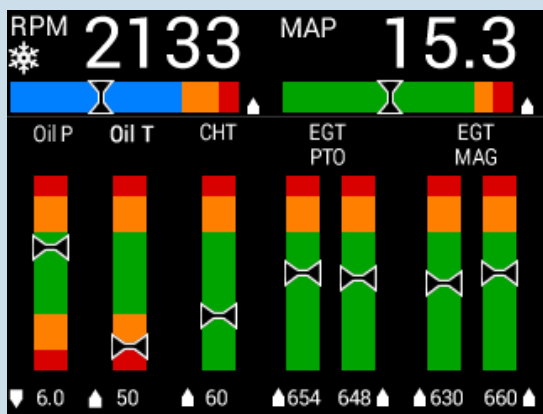
**4.** You can share your engine data with your **Rotax Service Center** anytime you need maintenance or help.



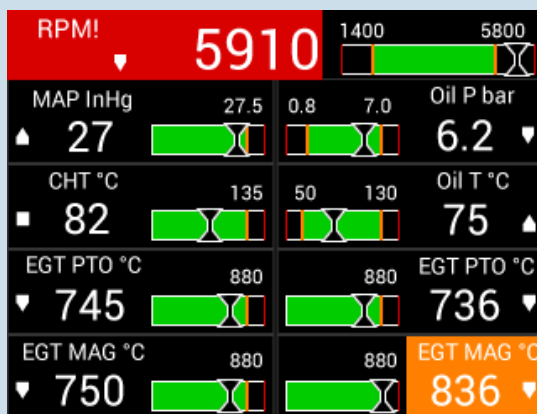
## The EngiBOX web portal

- **Safely store your engine data:** always available on your EngiBOX Portal account.
- **Always in control:** check your engine performance from anywhere / any platform.
- **Get better diagnosis and support:** share your data with your Rotax Service Center for a full analysis.

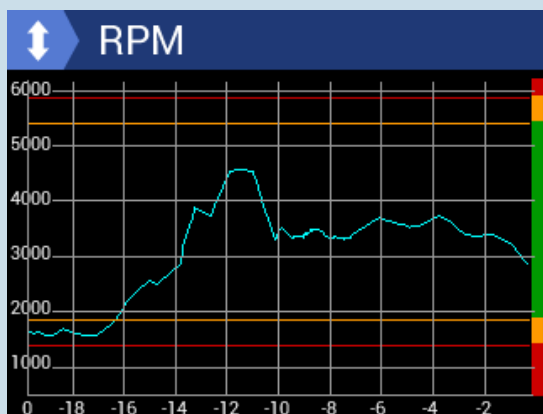
Register your account at: [engibox.avmap.it](http://engibox.avmap.it)



**Data Graphic View:** trends, warning and alarm limits.



**Data Values View:** trends, warning and alarm limits.



**Graphs:** available for performance analysis on each engine parameter



**Clock Page:** flight time, time since the last service overhaul, life time of the engine.

## Software Features

- EngiBOX measures and displays engine parameters.
- Warn you instantly if any measurement exceeds the engine limits.
- Update rate of five times per second.
- Data are recorded and stored in the internal memory (up to 160h).
- Data export to Micro SD or EngiBOX Mobile App.
- Download the free EngiBOX Mobile App to get Instant Support Service.

## Technical Specifications

- Dimensions: 95 x 95 x 88 mm
- Fitting standard 3-1/8" (79.5 mm) panel hole
- Weight: 250g
- Display: 3.5" colour LCD, with anti reflective coat 320x240 pixels, 500 cm/m<sup>2</sup>
- Micro SD slot
- Real Time Clock
- Bluetooth Low Energy
- Power Input range: 10-35 VDC
- Current consumption @ 12VDC: 150 mA MAX
- Operating Temperature range: -20° C / +70° C
- Manifold pressure sensor
- Sensor probe connection board:
  - 4 x Thermocouple sensor input for EGT
  - 2 x Resistance thermometer sensor input for Oil T, CHT, CT or Air T
  - 1 x Oil pressure sensor input for Oil P
  - 1 x RPM pick-up
  - 1 x Serial connection (RS-232, NMEA for GPS input)

## Compatible Sensors

- Thermocouple sensor type K and J (ungrounded): AvMap EGT probe and Rotax EGT probe
- Resistance thermometer sensor: standard Rotax NTC and PT-100
- Oil pressure sender: standard Rotax 4-20 mA pressure sender and resistive 10 Bar/150 psi VDO pressure sender.

**Note:** Sensor probes are not included in the box.

## Compatible Engines

Rotax Engine series: 447, 503, 582, 618, 912, 912s, 914.

**Note:** All compatible engines are preconfigured in the software installation wizard.

## AvMap avionic products

AvMap products are 100% Made in Italy since 1994 and used by private pilots as well as by Armed forces, Governmental agencies, rescue teams, Civil Defense. Find out AvMap's complete range of avionic products including portable GPS, Cockpit integrated solutions and instruments for light sport, ultralight and experimental aircraft.

### Headquarters:

AvMap Srl  
Viale Zaccagna 6  
54033 Carrara (MS) ITALY  
info@avmap.it  
 AvMap.it

### North America:

AvMap Satellite Navigation Inc.  
25 Enterprise Zone Drive, Suite 2  
Riverhead, NY, 11901, USA  
info@avmap.us  
 AvMap.us

### South America:

AvMap do Brasil Ltda.  
Rua Prof. Getúlio Nogueira de Sá, 51  
CEP: 13208-180 Jundiá, São Paulo, SP, Brazil  
info@avmap.com.br  
 AvMap.br