

FARMNAVIGATOR



Your farm is finally connected!

Manage your farm more efficiently:
access a large amount data about
vehicles, trips and consumption, in real time,
from your office PC.



Monitor your farm fleet

Localize vehicles,
monitor their
performance and
synchronize fields
in real time on
MyFarmnavigator.com



1 YEAR of telematic services included

FARMNAVIGATOR connected products include 1 year/1000h of telematic services on the MyFarmnavigator portal, with renewals of 1, 3 or 5 years.



Advanced telematics for agriculture

The result of AvMap's decades of experience in telematics solutions for the aeronautical, automotive and insurance markets.

Vehicles and fields connected with the office

Get the complete **FARMNAVIGATOR system** to exchange data bi-directionally. You can also try the field-office connection with the **All in One RTK** connected antenna.



FARMNAVIGATOR

G7Plus / **G7** Iso /
G12 Panorama

WiFi Terminal

- Parallel Guidance
- Automatic Steering
- Section Control
- Fields and Jobs database
- ISOBUS Virtual Terminal
- ISOBUS Task Controller
- Remote Assistance

It communicates bidirectionally with **MyFarmnavigator.com** to synchronize fields and databases.

FARMNAVIGATOR

4G AgriSIM

4G Telematics Box

The included multi-operator **SIM** provides 4G connectivity for all FARMNAVIGATOR products.

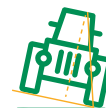
4G Agri SIM saves data in the internal memory (even in the absence of connection) and sends them to the MyFarmnavigator portal.

My Farmnavigator

Smart Farming Portal



Vehicle telemetry:
position and speed data,
trip log



Tilt sensor data



CANBUS data on engine
performance and
consumption



Fields synchronization
between the G7 /
G12 PANORAMA and
MyFarmnavigator.com



FARMNAVIGATOR

All in One RTK

Connected RTK Receiver

It receives **RTK corrections over the internet** thanks to built-in modem, multi-operator SIM and NTRIP client.

It communicates with **MyFarmnavigator.com** to provide telemetry and tilt sensor data.

My Farmnavigator

Smart Farming Portal



Vehicle telemetry:
position and speed data,
trip log



Tilt sensor data

Telematic Services

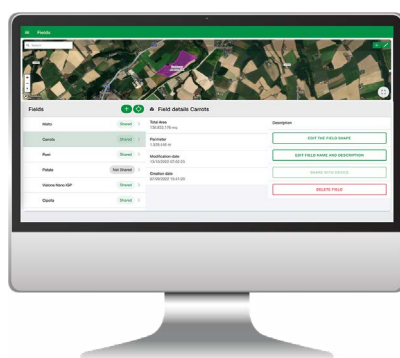
Monitor your fleet from the office or any mobile device.

The data remains available as long as the account is active on MyFarmnavigator.com

My **Farmnavigator**

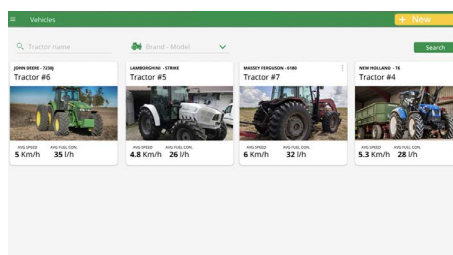
Register your products on **MyFarmnavigator.com**

1 Year of telematic services is included, and on the expiration date, you can renew for 1, 3 or 5 years.



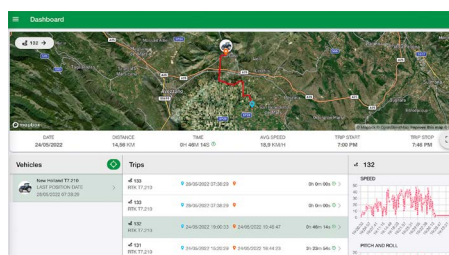
Fields synchronization

Synchronize the fields from the G7 / G12 PANORAMA or draw the fields on the map in the portal and send them to the desired terminals.



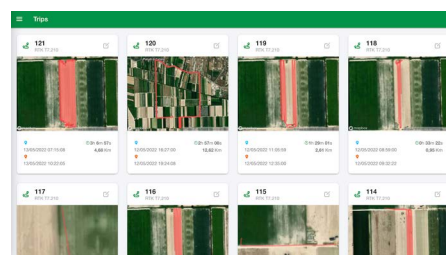
Connected Vehicles Database

Add all your connected vehicles (with model, type, picture) and their on board devices.



Localization

Localize in real time your vehicles on the map.



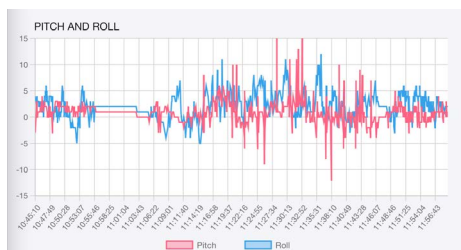
Trips Database

All the trips of the vehicle's works in the fields available at a glance.



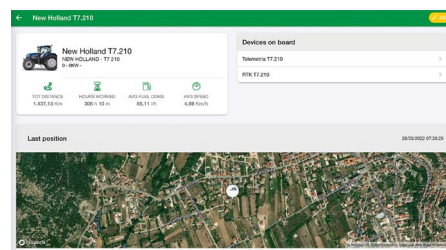
Telemetry

Graphs and color coded tracks on map to analyze the telemetry (speed, time, distance etc) of the vehicles working in the fields.



Tilt sensor data

Analyze tilt sensor data and receive overturning alarms for the safety of the drivers in the farm.



Vehicle performance (CANbus data)

Monitor performance and diagnose problems by analyzing CANbus data (fuel level, consumption, rpm and engine temperature).



All in One *RTK*

Connected RTK Receiver

Technical Specifications

- Dimensions: \varnothing 98 mm x H 50 mm
- Weight: 240 g without power cable
- Power cable: 4 m Conxall - DB9
- Steel bracket: 133 x 101 mm
- Triaxial accelerometer + gyro
- Waterproof: IP67
- Supply voltage: 10-35 V DC
- Operating temperature: -20 °C / +60 °C
- Storage temperature: -30 °C / +80 °C
- Power consumption: 125 mA max @12V DC (~ 1.5 W)

Communication

- 2G Modem
- Built-in SIM on Chip
- GNSS Receiver: GPS + GLONASS + GALILEO + BEIDOU + SBAS
- GNSS frequency band: L1, L2
- GNSS rate: configurable (up to 10Hz)
- RS232 baud rate: configurable (115200 default)
- RS232 protocol: NMEA0183 configurable (GGA, GLL, RMC, GSA, GSV, VTG, ZDA, GST)

Performance and Connectivity

- RTK accuracy +/- 2 cm
- Baseline RTK 100 Km
- Integrated NTRIP client
- Automatic connection to IoT server
- Automatic software updates

Main Functions

- GNSS receiver with RTK corrections
- It saves and sends to MyFarmnavigator portal:
 - Vehicle movements
 - Tilt sensor data



4G *AgrisIM*

4G Telematics Box

Technical Specifications

- Dimensions: 105 mm x 102.3 mm
- Weight: 166 g
- Built-in GPS
- Power cable: 2.5 m w/ free wires
- CANbus (J1939)
- Triaxial accelerometer + gyro: ACC 500 Hz, min 0.125 g - max 16 g
- 4G Modem
- Built-in SIM on Chip*
- Wi-Fi
- Waterproof: IP55
- Supply voltage: 9-24 V DC

- Operating temperature: -20 °C / +65 °C
- Storage temperature: -40 °C / +85 °C
- Power consumption: 0.33A @12 V DC (4W) typical - 0.7A @12 V DC (8.5 W) max

Performance and Connectivity

- Transmission frequency range: 791-2690 MHz
- Integrated NTRIP client
- Automatic connection to IoT server
- Automatic software updates

Main Functions

- Connectivity for G7 FARMNAVIGATOR
- It saves and sends to MyFarmnavigator portal:
 - Vehicle movements
 - Tilt sensor data
 - CANBus data: fuel level, consumption liters / hours, rpm and engine temperature **

* Also available in 4G Agri version with SIM slot (SIM not included)

** If available from the vehicle's CANbus.



Customer support

support@avmap.it
+ 39 0585 784044



Sales

farm@avmap.it



Distributed by: