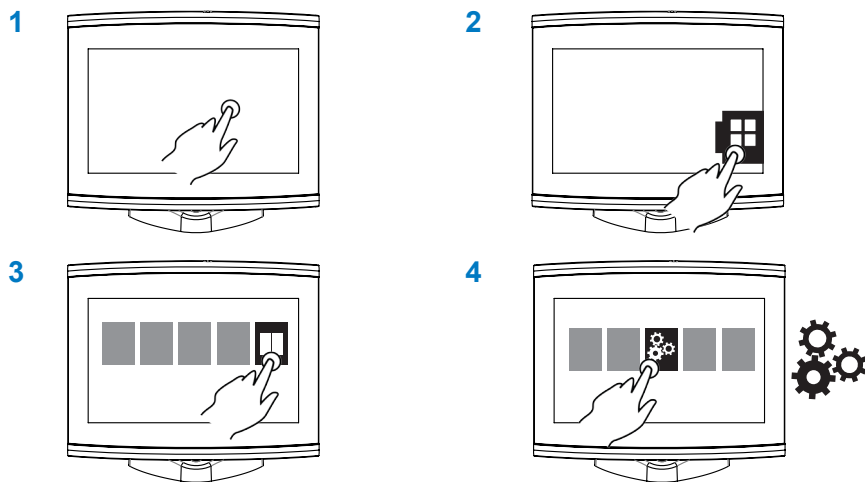
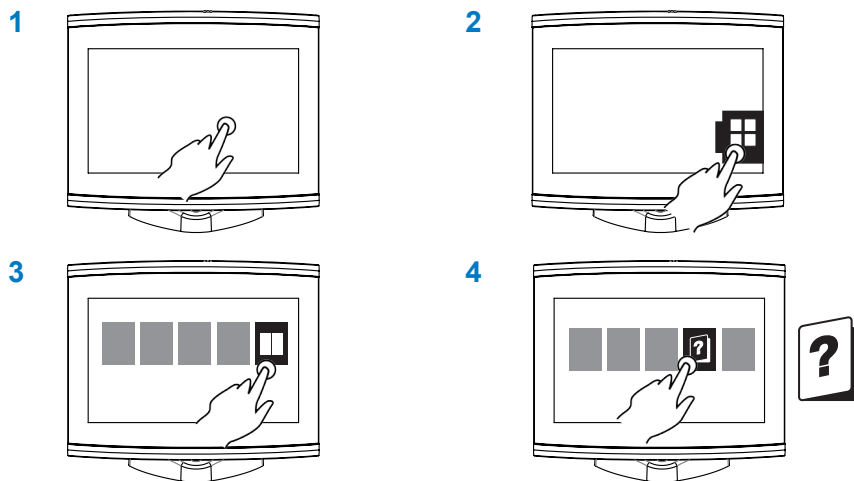


### 3. Settings



### 4. User Manual



EN The manufacturer takes no liabilities for errors contained herein, or for incidental or consequential damages in connection with the performance or use of this material.

FR Le fabricant ne peut en aucun cas être tenu responsable des erreurs éventuelles contenues dans ce manuel, ni des dommages ou incidents consécutifs à l'utilisation de ce matériel.

IT Il produttore declina ogni responsabilità nel caso di errori o inesattezze di questo documento, ivi compresa la responsabilità per danni incidentali o consequenziali derivanti dall'utilizzo di questo documento.

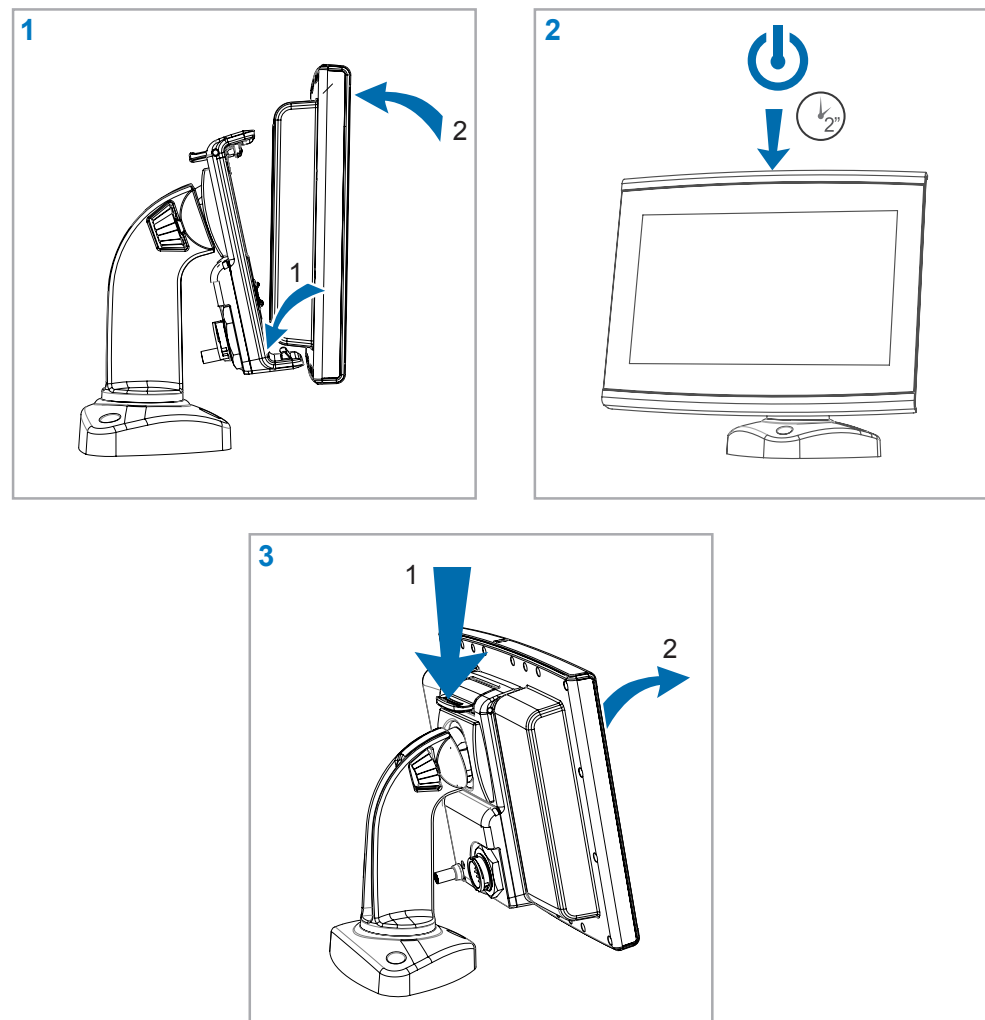
DE Der Hersteller dieser Hard- und Software übernimmt keine Garantien für Fehlerfreie Funktionen, und nicht für Folgeschäden an Hard- und Software die durch den fehlerhaften Gebrauch oder Bedienung entstehen.

ES El productor no asume responsabilidad alguna por los errores u omisiones. Tampoco se asumen responsabilidades por los daños que se deriven del uso de la información que incluye esta publicación.



# 7" Plotter Quick Guide

## 1. On/Off

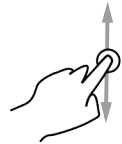


## 2. Multitouch

### Basics

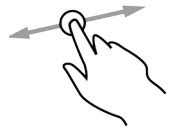


**EN** Select  
**FR** Selection  
**IT** Seleziona  
**DE** Auswählen  
**ES** Seleccionar



**EN** Scroll page  
**FR** Defilement page  
**IT** Scorri pagina  
**DE** Seite blättern  
**ES** Desplazar

### Map interaction



**EN** Explore the map  
**FR** Deplacement de la carte  
**IT** Esplora la mappa  
**DE** Karte erkunden  
**ES** Chequear el mapa



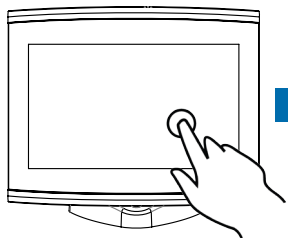
**EN** Rotate the map  
**FR** Rotation de la carte  
**IT** Ruota la mappa  
**DE** Karte drehen  
**ES** Rotar el mapa



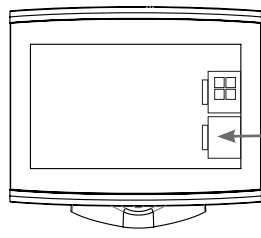
**EN** Zoom the map  
**FR** Zoom de la carte  
**IT** Zoom della mappa  
**DE** Kartenskala + / -  
**ES** Acercar o alejar el mapa



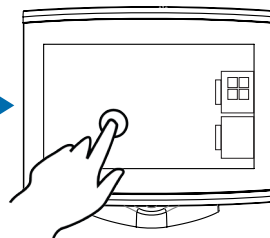
**EN** Tilt the map  
**FR** Inclinaison de la carte  
**IT** Inclina la mappa  
**DE** Karte verschieben  
**ES** Inclinar el mapa



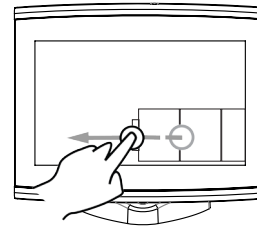
**EN** Activate the display  
**FR** Activation de l'affichage  
**IT** Attiva lo schermo  
**DE** Anzeige aktivieren  
**ES** Activar la pantalla



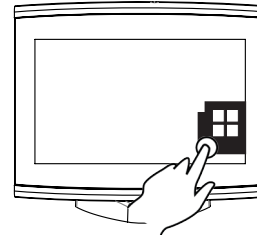
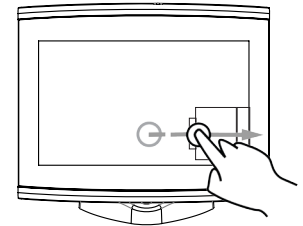
**EN** Place the cursor  
**FR** Placer le curseur  
**IT** Piazza il cursore  
**DE** Cursor platzieren  
**ES** Colocar el cursor



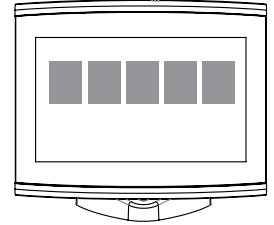
### Slide menu on map



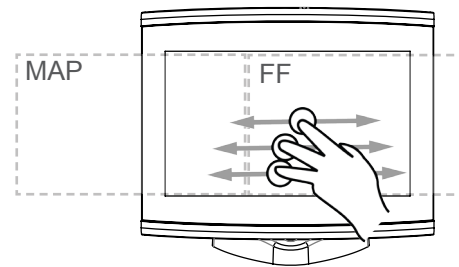
**EN** Open and close a slide menu on the map  
**FR** Ouvrir et fermer le menu "diaporama"  
**IT** Aprire e chiudere i menu a tendina sulla mappa  
**DE** Fenster-Menü auf der Karte öffnen und schließen  
**ES** Abrir y cerrar un menu en el mapa



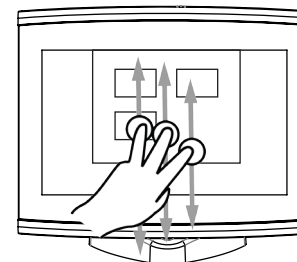
**EN** Access to the Map Menu  
**FR** Acces au Menu Cartographie  
**IT** Accedi al Menu di Mappa  
**DE** Zugang zum Karten-Menü  
**ES** Abrir el Menu Mapa



### Cycle



**EN** Cycle pages  
**FR** Selection page  
**IT** Rotazione delle pagine  
**DE** Seiten verschieben  
**ES** Recorrer paginas



**EN** Open the Page Controller  
**FR** Ouverture Page Controleur  
**IT** Aprire il Controllo Pagine  
**DE** Seiten-Steuerung öffnen  
**ES** Abrir el Controlde de Páginas